



1



2



3



4



5



6



7



8



9



10



11



12



13



14



15



16



17



18



TYPES

- Type **A**: with 2 key rings
- Type **B**: with mounting tab and key ring
- Type **C**: with 2 mounting tabs

Retaining cable

AISI 316 stainless steel

Plastic coated (PVC)

Transparent **TR**

Clamping plate

AISI 316 stainless steel

Plain

Ring

AISI 316Ti stainless Steel

Plain, tumbled

Press sleeves

AISI 316 stainless steel

FEATURES AND APPLICATIONS

Stainless steel retaining cables GN 111.8 are available in 3 different types and can therefore be used in a wide range of applications, e.g. for loss protection or as connecting and mounting cables.

Due to the selection of materials, the stainless steel retaining cables are suitable for use in highly corrosive environments.

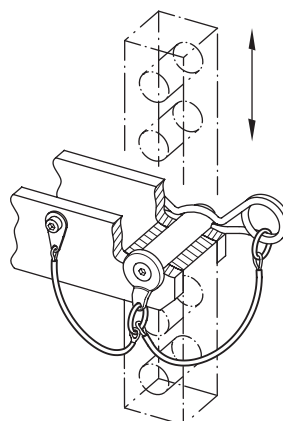
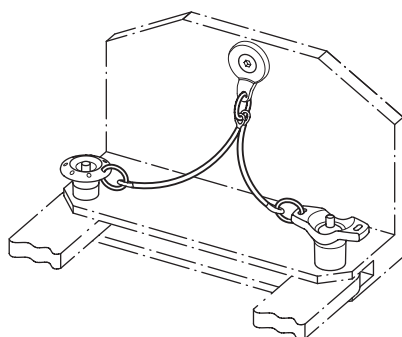
On delivery the key rings are already mounted on the stainless steel retaining cable.

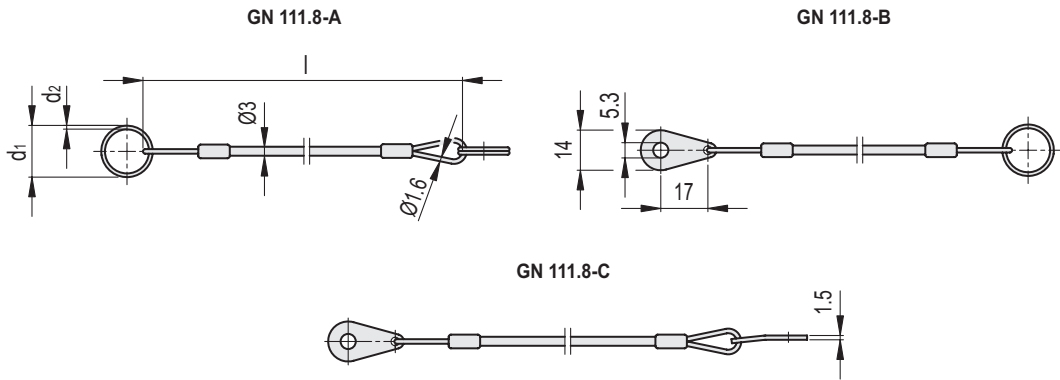
With type A, both rings have the same diameter d_1 .

For all types the loops are reversed laterally and attached parallel to each other, which is not entirely considered in the simplified drawing.

The load values given in the table are non-binding guide values and rule out any liability.

Type A and type B are ideal suitable for ball lock pins and locking pins with axial lock.





GN 111.8-A

INOX STAINLESS STEEL

Code	Description	d1	d2	l	Static load with ring [N]	Static load without ring [N]	⚖
GN.40831	GN 111.8-150-14-A-TR	14*	1	150	75	1500	12
GN.40836	GN 111.8-150-18-A-TR	18**	1.3	150	125	1500	12
GN.40841	GN 111.8-150-24-A-TR	24***	1.5	150	140	1500	14
GN.40851	GN 111.8-200-14-A-TR	14*	1	200	75	1500	15
GN.40856	GN 111.8-200-18-A-TR	18**	1.3	200	125	1500	15
GN.40861	GN 111.8-200-24-A-TR	24***	1.5	200	140	1500	17
GN.40871	GN 111.8-320-14-A-TR	14*	1	320	75	1500	22
GN.40876	GN 111.8-320-18-A-TR	18**	1.3	320	125	1500	22
GN.40881	GN 111.8-320-24-A-TR	24***	1.5	320	140	1500	24

GN 111.8-B

INOX STAINLESS STEEL

Code	Description	d1	d2	l	Static load with ring [N]	Static load without ring [N]	⚖
GN.40832	GN 111.8-150-14-B-TR	14*	1	150	75	1500	14
GN.40837	GN 111.8-150-18-B-TR	18**	1.3	150	125	1500	14
GN.40842	GN 111.8-150-24-B-TR	24***	1.5	150	140	1500	14
GN.40852	GN 111.8-200-14-B-TR	14*	1	200	75	1500	17
GN.40857	GN 111.8-200-18-B-TR	18**	1.3	200	125	1500	17
GN.40862	GN 111.8-200-24-B-TR	24***	1.5	200	140	1500	17
GN.40872	GN 111.8-320-14-B-TR	14*	1	320	75	1500	25
GN.40877	GN 111.8-320-18-B-TR	18**	1.3	320	125	1500	25
GN.40882	GN 111.8-320-24-B-TR	24***	1.5	320	140	1500	25

GN 111.8-C

INOX STAINLESS STEEL

Code	Description	l	Max. static load [N]	⚖
GN.40846	GN 111.8-150-C-TR	150	1500	16
GN.40866	GN 111.8-200-C-TR	200	1500	19
GN.40886	GN 111.8-320-C-TR	320	1500	26

* Suitable for the following lock pins: GN 113.11, GN 113.12 only Ø5, Ø6; GN 113.3, GN 113.6, GN 113.8, GN 114.2, GN 114.3, GN 114.6 only Ø5, Ø6, Ø8; GN 113.5, GN 113.6, GN 114.2, GN 114.3, GN 114.6, GN 124.1, GN 124.2 all the Ø.
** Suitable for the following lock pins: GN 113.11, GN 113.12, GN 314 only Ø8, Ø10, Ø12; GN 113.1, GN 113.3, GN 113.4, GN 113.7, GN 113.8, GN 113.9, GN 113.10, GN 113.30, GN 214.2, GN 214.3, GN 214.6 only Ø10, Ø12, Ø16, Ø20, Ø25
*** Suitable for the following lock pins: GN 113.11, GN 113.12, GN 314 only Ø16, Ø20, Ø25

